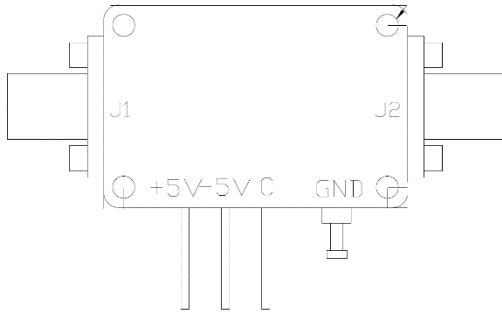


0.1-70GHz SPST Switch, High Power



Description:

AT-SPST-0070T2 is high power, wide band SPST switch from 0.1-70GHz. The GaAs Based Pin switch is controlled by TTL with +/-5V power supply. The switch is with good high isolation and good return loss performance.

The modules is with 1.85mm female connector, other connectors can be provided according to request.

More information, visit www.atmicrowave.com

Feature

- ✓ Frequency: 0.1-70GHz
- ✓ Low insertion Loss, -6.8 dB
- ✓ High isolation: -50dB
- ✓ Very fast speed

Application

- ✓ Test Equipment
- ✓ ROF (RF Over Fiber)
- ✓ Radar System
- ✓ Telecom Communication

Electronical Specifications:

Parameter	Min	Typical	Max
Frequency		0.1-70GHz	
Insertion Loss		-6.8dB	-8.9dB
Isolation	-30	-50 dB	
Return Loss		-15dB	
Switching Time		100ns	
P1dB @17GHz		+20dBm	
Bias Voltage		+/-5V, 50mA	
Control		TTL	
Spec Temp		25C	





AT-SPST-0070T2

0.1-70GHz SPST Switch

Mechanical Information

Item	Description
Input Port	1.85mm Female
Output Port	1.85mm Female
Bias/Control	Feed Through Pin
Case Material	Copper
Finish	Gold Plated
Weight	50g
Size:	See outline

Absolute Maximum Ratings Table

Parameter	Value
Bias Voltage	+5V +/-10%, -5V +/-10%
RF Input Power	+23dBm
Operating Temperature	-40 to +85C
Storage Temperature	-65 to +150C

TTL and Bias Voltage

TTL	V2
High	2.0 to 5.5V
Low	0 to 0.8V
VDD	+5V (+/-5%)
VEE	-5V (+/-5%)

Truth Table

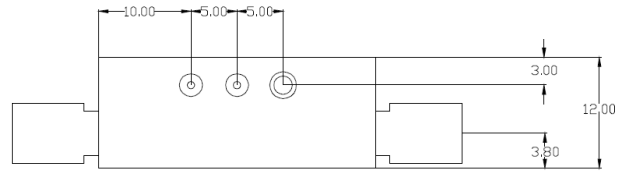
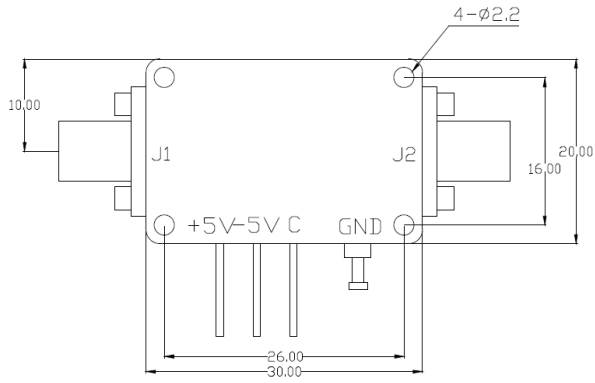
TTL	J1-J2
High	ON
Low	OFF

Notes:

1. Datasheet may be changed according to update of MMIC, Raw materials , process, and so on.
2. This data is only for reference, not for guaranteed specifications.
3. Please contact AT Microwave team to make sure you have the most current data.



Dimension (mm)



SPST

